



Aluminium

NATIONAL ALUMINIUM
GINCO GROUP OF COMPANIES

Building the Innovation



TABLE OF CONTENTS



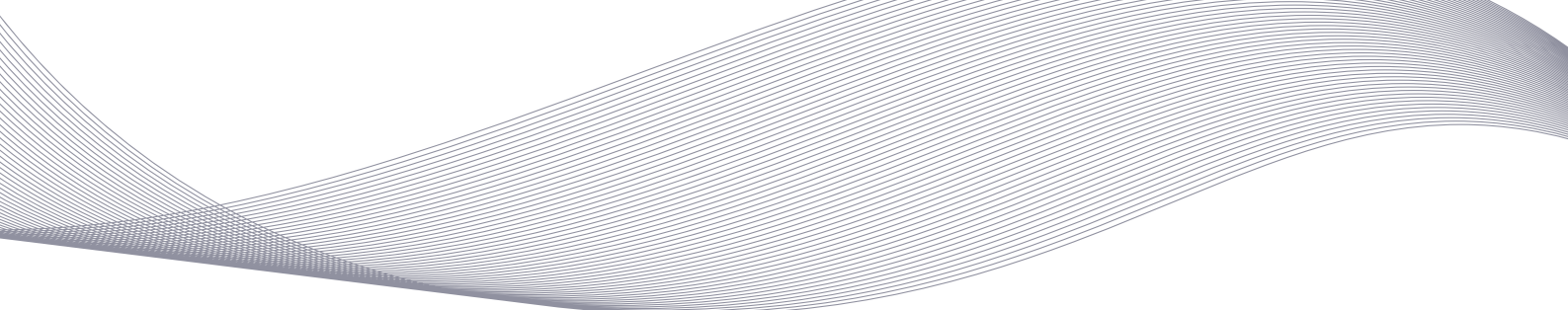


TABLE OF
CONTENTS

ABOUT US

Who We Are?

Group of Companies - GINCO

Certificates & Approvals

Specialized Areas of Work

STRUCTURE & ORGANIZATION

Management & Key Personnel

Organizational Chart

OUR FACILITIES

Production Capabilities

List of Equipment

Manpower - Factory & Site

Workmen Compensation Policy

SHOP DRAWING SAMPLES

COMMERCIAL LICENSE & CERTIFICATES

PREVIOUS APPROVALS

PROJECTS LIST

AWARDS & RECOGNITION





ABOUT US





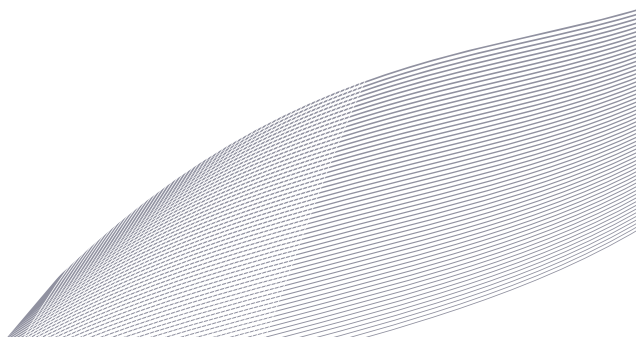
ABOUT US

WHO WE ARE?

National Aluminum & Steel Factory, a subsidiary of the GINCO Group of Companies, founded over decades ago in **1983** is one of the United Arab Emirates' fast growing and most recognizable names when it comes to the architectural Aluminium fabrication.

Focusing on the advanced, demanding, and highly focused triangle by clients, consultants & regulations – time, cost, and quality, our professional, highly qualified, skilled and substantially experienced team is cooperating by undertaking the challenge of executing different complex designs to bring innovative, competitive and satisfactory architectural Aluminium fabrication and installation solutions to the market at different stages of the work starting from R&D, CAD Drawings, planning, Design to Installation stage.

Our **70,000 SQMS** factories located in Ajman and Ras Al-Khaimah with an overall annual production capacity of **432,000 SQMS** is well equipped with sophisticated machines. Consequently, it's ideal to cater multiple large size and complex design projects. The quality of workmanship along with our latest facilities, up to date support and satisfied clients list is the key to our consistent growth.





ABOUT US

WHO WE ARE?



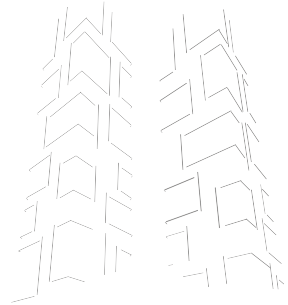
OUR:

● **MISSION**

We exist to shape the future of facade construction by ensuring a unique quality products and services to society members by implementing the innovative ideas of architects in the real world

● **VISION**

Building the innovation. Guaranteeing comfort and welfare to society members



ABOUT US

GROUP OF COMPANIES - GINCO

Ginco Group of Companies Are:



ABOUT US

WHO WE ARE?

“NATIONAL ALUMINIUM IS AN APPROVED FABRICATOR AND CERTIFIED BY MOST OF INTERNATIONAL SYSTEMS PROVIDERS”

Some of the international system providers are: Schuco, Gutmann, Technal, Alumil, Aluk, UCS etc.



Furthermore, to match the demands of construction market with high Quality products, NAL is aligned with Internal Facade Standards under strict supervision of highly skilled & trained Quality Team. We have a fully developed QMS to achieve the Quality expectations of clients & ISO certification (ISO 9001:2015, BS OHSAS 18001:2007, and ISO 14001:2015) from International authority.

ABOUT US

WHO WE ARE?

Some of the approvals from our international system providers are:

Aluminium
Steel
PVC-U
Design
Service

SCHÜCO

M/s : National Aluminium & Steel Factory – Ajman, U.A.E.
Fax : +971 6 7437114
Client : Select Group
Contractor : ALEC
Project : Marina Gate 3 – Dubai, U.A.E.

Sharjah, 12 July 2018

AUTHORIZATION LETTER

To whom it may concern,

We hereby confirm that Schüco Middle East Windows and Façade System LLC will allow M/s National Aluminium & Steel Factory – Ajman, U.A.E. the use of Schüco Systems and support on the above mentioned project.

Our support to M/s National Aluminium & Steel Factory – Ajman, U.A.E. will include:

- Allowing the use of Schüco designs and the technical support during the design process.
- Allowing purchase of Schüco Systems genuine parts (Aluminum / Accessories) and all related required punching tools and equipment to fabricate and install the system.

This authorization has a validity of one (1) year from the date of issuance.

Schüco Middle East is the sole Schüco subsidiary authorized by Schüco International KG (www.schuco.com) to sell genuine Schüco aluminum profiles and accessories in the Territory, which includes countries in the Middle East and Africa. Schüco Middle East is also the sole entity authorized to approve, appoint, and authorize Schüco fabricators in the Territory, and is the only Schüco subsidiary authorized to sell un-fabricated profiles and accessories in the Territory.

If the materials sold in mill finish, powder coating should be done by an approved applicator with approved powder coating materials.

Please do not hesitate to contact Schüco Middle East should further details and/or clarifications be needed regarding this authorization.

Yours truly,

For and on Behalf of Schüco Middle East Windows & Façade System L.L.C.


Ammar H. Alul
General Manager

SCHÜCO
Schüco Middle East
Windows and Façade Systems L.L.C.
P.O. Box 1861 - Sharjah - U.A.E.

Schüco Middle East Windows and Façade Systems L.L.C.
P.O. Box 1861 - Sharjah - U.A.E.
Tel: +971 6 5336689
Fax: +971 6 5337732
Tax Registration No. : 100059035400003
www.schuco.ae - info@schucoma.com

شركة شوكو ميديال إيست للواجهات والنوافذ والمنظومة الزجاجية
ص.ب. 1861 - الشارقة - الإمارات العربية المتحدة
هاتف: +971 6 5336689
فاكس: +971 6 5337732
رقم التسجيل الضريبي: 100059035400003
www.schuco.ae - info@schucoma.com

ABOUT US

WHO WE ARE?



GUTMANN



Ref. No: LTR/58/090320/NATIONAL

9 March 2020

M/S: National Aluminium & Steel Factory
(Ginco Group of Companies)
PO Box 2223, Ajman, UAE

SUBJECT: AUTHORIZATION LETTER

TO WHOM IT MAY CONCERN

We hereby confirm that "National Aluminium & Steel Factory" is our approved fabricator and installer of Gutmann Systems Middle East FZCO.

Our support for (National Aluminium & Steel Factory) related to Gutmann System will be:

- ✓ Allowing the use of Gutmann design and technical support during the design and the engineering process.
- ✓ Allowing the purchase of Gutmann Systems including (Aluminium, Accessories and Hardware).

This letter is valid till March 10, 2021.

Should you require any further information, please contact the undersigned.

Gutmann Systems Middle East FZCO

Best regards


Sami Natsheh
General Manager



AFFILIATE
OF EMAAR
INDUSTRIES
& INVESTMENTS
(PVT) JSC

GUTMANN Systems Middle East FZCO
Dubai Investment Park - 2
P. O. Box: 54563
T: +97 14 88 5333 6 / +97 14 80 8050 0
F: +97 14 88 5333 9
info@gutmannme.com | www.gutmann.ae

Trading License : 418



ABOUT US WHO WE ARE?



12th March 2019

Ref.: TME/DXB/20190312/AF_1

TO WHOM IT MAY CONCERN

Subject : TECHNAL® Authorized Fabricator

Dear Sir,

As the legal entity for TECHNAL® systems in the Middle East, TECHNAL MIDDLE EAST, is pleased to confirm the following points:

M/S. NATIONAL ALUMINIUM & STEEL FACTORY , is one of the approved fabricators, carrying out the fabrication & installation of TECHNAL® systems in UAE, and therefore are authorized to procure TECHNAL products from TECHNAL MIDDLE EAST.

As both, M/S. NATIONAL ALUMINIUM & STEEL FACTORY , and TECHNAL MIDDLE EAST, have mutual interests in the construction of prestigious projects in the Territory, therefore, M/S. NATIONAL ALUMINIUM & STEEL FACTORY , is collaborating with TECHNAL, in all the technical/aluminium engineering approach in view to offer the best in terms of products, fabrication and installation solutions.

TECHNAL MIDDLE EAST provides full technical and engineering support to M/S. NATIONAL ALUMINIUM & STEEL FACTORY as well as the training on respective products' fabrication & assembly according to TECHNAL® standards.

We, at TECHNAL MIDDLE EAST, shall remain at your disposal and trust to have the privilege of satisfying and meeting the requirements of all concerned.

Yours faithfully,

For TECHNAL MIDDLE EAST WLL

SAM ROBINSON
General Manager



Technal Middle East W.L.L.
P.O. Box : 21648, Manama, Bahrain
Tel. : (+973) 17 225777
Fax Administration : (+973) 17 217799
Fax Commercial : (+973) 17 229299

تكنال الشرق الأوسط ذ.م.م.
ص. ب. : ٢١٦٤٨ - المنامة - مملكة البحرين
هاتف : (+٩٧٣) ١٧٢٢٥٧٧٧
فاكس الإدارة : (+٩٧٣) ١٧٢١٧٧٩٩
فاكس التجار : (+٩٧٣) ١٧٢١٩٢٩٩

Branch - UAE
P.O. Box : 54970, Dubai Airport
Free Zone Authority, Dubai,
U.A.E.
Tel. : (+971) 4 701 7600
Fax Administration : (+971) 4 701 7656
e-mail : technal@emirates.net.ae
Branch No. : 5704

فرع الإمارات العربية المتحدة
ص. ب. : ٥٤٩٧٠ - المنطقة الحرة مطار دبي
الإمارات العربية المتحدة
الهاتف : (+٩٧١) ٤٧٠١٧٦٠٠
فاكس الإدارة : (+٩٧١) ٤٧٠١٧٦٥٦
البريد الإلكتروني: technal@emirates.net.ae

www.technalmiddleeast.com SA.P.O. : 48366

www.technalmiddleeast.com SA

٤٨٣٦٦ - ص.ب.

5704 - No. Branch

٥٧٠٤ - رقم الفرع

ABOUT US

WHO WE ARE?



To whom it may concern

3rd March 2019

Subject: ALUMIL System Authorized Fabricator

Dear Sir / Madam,

This is to inform you that **M/s NATIONAL ALUMINIUM L.L.C** is accredited as Alumil Middle East Authorized Fabricator.

The authorization is subject to the following conditions:

- a. M/s NATIONAL ALUMINIUM L.L.C will adopt Alumil guidelines as per the training conducted.
- b. Alumil Middle East will supply all accessories & hardware related to the ALUMIL profiles.

We remain at your disposal for any further information/clarifications required.

For ALUMIL MIDDLE EAST,



Christopher Chatzigeorgiou
Managing Director

ALUMIL Middle East DMCC
Office 2907, Mazaya Business Avenue 551, Jumeirah Lakes Towers, Dubai, United Arab Emirates
Tel: +971 4 4425930, fax: +971 4 4416528
Email: sales.uae@alumil.com , marketing.uae@alumil.com
Company is registered & licenced as a FREEZONE Company under the rules & regulations of DMCCA



ABOUT US

WHO WE ARE?



2020

ALUK[®]
FABRICATOR

NATIONAL ALUMINIUM & STEEL FACTORY
(GINCO GROUP OF COMPANIES)

National Aluminium & Steel Factory(GINCO) Building
New Ajman Industrial Area
2233 Ajman, UAE
Tel: (+971) 6 743 3417
Fax: (+971) 6 743 3714
Email: sales@gincoaluminium.com
Website: www.gincoaluminium.com

IS HEREBY APPOINTED BY ALUK MIDDLE EAST AS ALUK
AUTHORIZED FABRICATOR AND INSTALLER IN
UNITED ARAB EMIRATES

Issued : 2020



► Aluk Middle East
Unit 2005 One Lake Plaza Bldg, Cluster T,
Jumeirah Lake Towers, Dubai, U.A.E.

mideast.aluk.com

ABOUT US

WHO WE ARE?

UCS GREEN
SYSTEM

Green Building Curtain Wall Technology
Semi Unitized Curtain Wall System



AUTHORIZATION LETTER

To whom it may concern,

We hereby confirm that UCS GREEN SYSTEM appointed

M/S. NATIONAL ALUMINIUM & STEEL FACTORY
(GINCO GROUP OF COMPANIES)

National Aluminium & Steel Factory (Ginco) Building
New Ajman Industrial Area
2233 Ajman, UAE
Tel: (+971) 67433417
Fax: (+971) 67433714
Email: sales@gincoaluminium.com
Website: www.gincoaluminium.com

AS AUTHORIZED AND APPROVED UCS GREEN SYSTEM FABRICATOR AND INSTALLER IN GCC.
REGION.

Issued: 2018



UCS GREEN SYSTEM MIDDLE EAST

ABOUT US

WHO WE ARE?



HUECK Middle East Aluminium
Systems LLC

DIP 2, Community 597, Street
72, P.O. Box 62194
Dubai, UAE

T: +971 (0)4 804 8600
Email: middleeast@hueck.ae
Website: www.hueck.ae

Date: 23/02/2022

Ref No: HMESD-OL-0058-22

M/S: National Aluminium & Steel Factory (Genco) And National Aluminium LLC

Attn: To Whom It May Concern

Subject: Authorized Fabricator

This is to confirm that **National Aluminium & Steel Factory (Genco) And National Aluminium LLC** is an authorized fabricator of Hueck Systems.

Hueck is recognized for its competence and technical know-how with respect to windows, doors, and curtain wall solutions for demanding real estate housings as well as high-rise buildings.

All our systems have been tested according to the relevant European EN-/DIN-standards and all certificates are available in English language.

HUECK Middle East Aluminium Systems LLC



HUECK Middle East Aluminium Systems LLC, DIP 2, Community 597, Street 72, P.O. Box 62194, Dubai UAE,
Tel. +971 4 804 8600, Email middleeast@hueck.ae Website www.hueck.com
Bank: Emirates Islamic Account no 3708317314101, IBAN: AE100340003708317314101 Swift Code MEBLAEADRIQ

ABOUT US

WHO WE ARE?



TO WHOM IT MAY CONCERN

September 1st 2021

Subject: Authorised Fabricator for SYKON GmbH

SYKON® GmbH & Co. KG with Corresponding address of Industriesstradde 10, 32278 Kirchlegern, first incorporating in October 1970 under no HR A 1423 According to German Laws.

SYKON® GmbH (Middle East, Asia & Africa) Corresponding Address of Office 1903, Bayswater Tower, Business Bay, UAE registered under license number 916262.

We hereby confirm **National Aluminium and Steel Factory** corresponding Address P.O Box 2223, Ajman as **authorised and qualified fabricator for SYKON® GmbH**.

Our intention is to share and extend all our technical expertise in the projects from selection of product, design, logistics, fabrication & installation throughout the project line with our own German standard. All profiles, accessories and hardware to be supplied by SYKON® GmbH. National Aluminium and Steel Factory should follow all guidelines as per the training conducted for specific project.

For SYKON® GmbH,

Zain Mohammad Riaz
Managing Director



SYKON GmbH - Middle East, Asia & Africa

Head Office: P.O Box: 1239, PC: 111, Mabellah Industrial, Road#: 4, Muscat, Sultanate of Oman
Tel: +968 244 54718, support@sykon.ae, www.sykon.ae
Dubai Office: Suite 1903, The Bayswater Tower, Business Bay, Dubai, U.A.E
Tel: +971 4 575 7054, sales@sykon.ae, www.sykon.ae

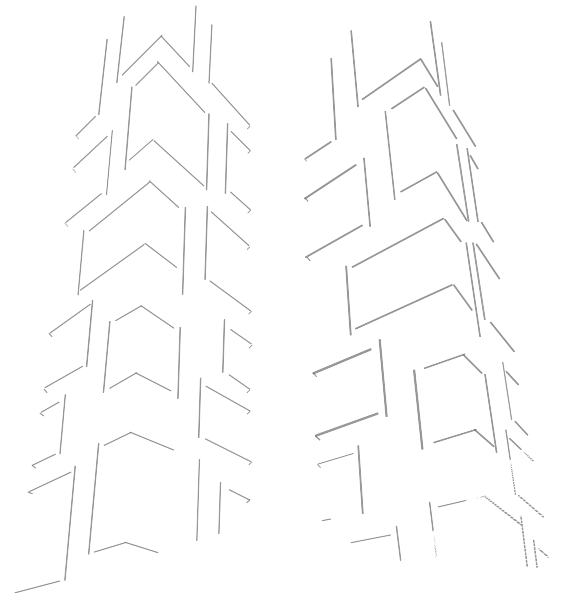
ABOUT US

SPECIALIZED AREAS OF WORK

We are providing different types of products, mainly purchased locally and internationally from the manufacturers who have reliable guarantee system and high quality control on the raw material. Our clients' satisfaction results from the strict quality assurance of the products.

We Mainly Concentrate On The Design, Production & Installation Of:

- Unitized Curtain Wall
- Stick Curtain wall- Conventional & Non-Conventional types
- Aluminium Composite Panel Cladding
- Skylights
- Balustrade & Handrails
- Swing Doors
- Hinged Doors
- Sliding Windows
- Hinged Windows
- Turn and Tilt Windows
- Arches
- Partitions
- False Ceilings
- Remote Control Automatic Doors
- Automatic Revolving Doors
- Rolling Shutters Security & Claustra Grills
- Gates and Other Products.





STRUCTURE & ORGANIZATION



STRUCTURE & ORGANIZATION

MANAGEMENT & KEY PERSONNEL

Mohammad Sharif Pishdad

Role: Management Director

Qualification: Mechanical Engineer

Experience: 37+ years in Facades

Arash Mohammad

Role: General Manager

Qualification: Electrical Electronics Engineering

Experience: 23+ years in Construction & Facade

Arman Mohammad

Role: Deputy General Manager

Qualification: Masters in Business Administration

Experience: 13+ years in Facade

Mohammad Eisa

Role: Finance Manager

Qualification: Bachelors of Accounting

Experience: 14+ years in Facades

Jack Ziade

Role: Factory Manager

Qualification: Masters of Mechanical Engineering

Experience: 23+ years in Facade

Mohammad Murad

Role: Projects Director

Qualification: Bachelors of Architectural Engineering

Experience: 21+ years in Facades

Mohammad Husain Dalvi

Role: Quantity Survey & Cost Control Manager

Qualification: Bachelors of Architectural Engineering

Experience: 16+ years in Facades

Safdar Shafat

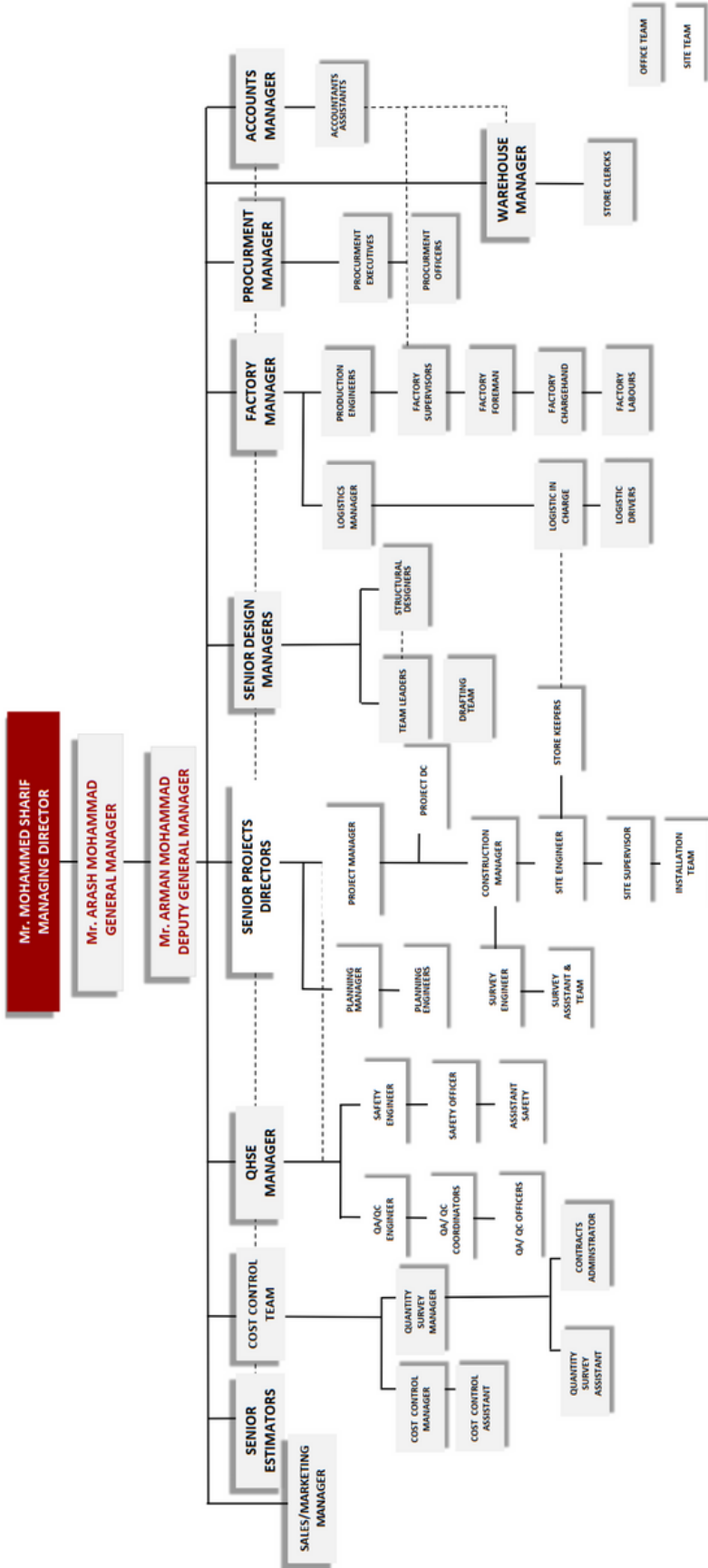
Role: Procurement Manager

Qualification: Masters in Business Administration

Experience: 19+ years in Facade

STRUCTURE & ORGANIZATION

ORGANIZATIONAL CHART (UAE)





OUR FACILITIES



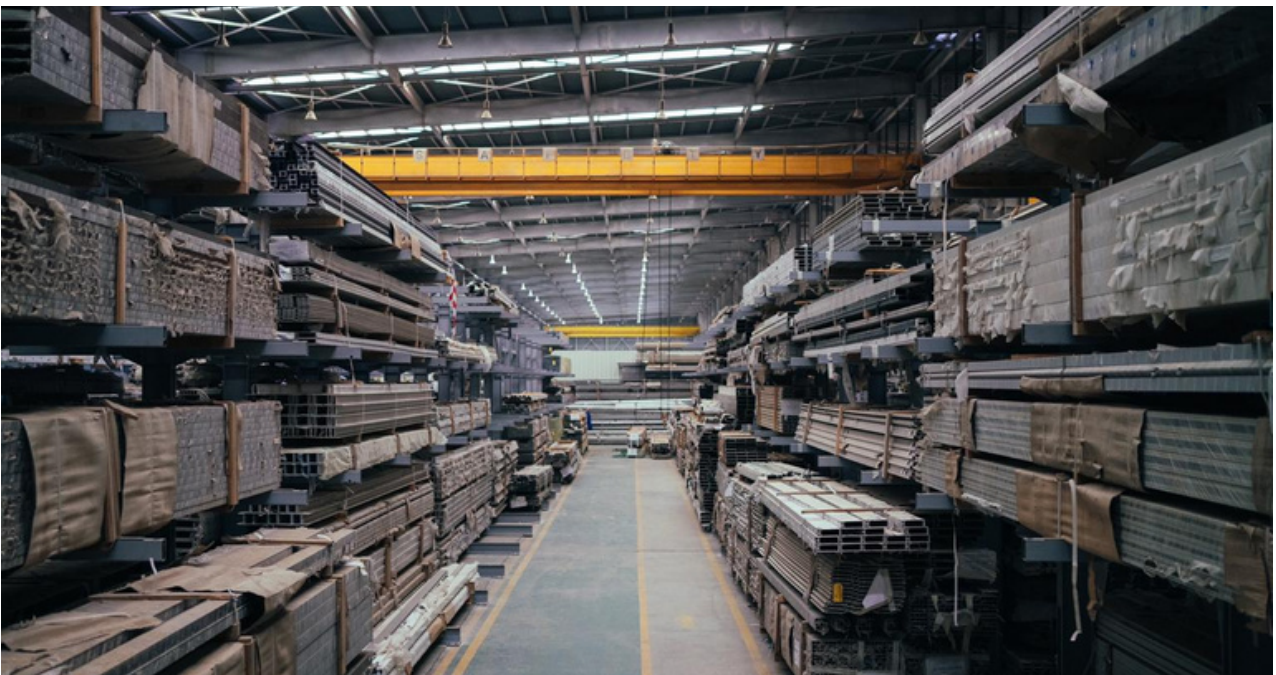
OUR FACILITIES

OUR FACTORY



OUR FACILITIES

OUR FACTORY



OUR FACILITIES

PRODUCTION CAPABILITIES

National Aluminium has a fully equipped production facilities with over 70,000 SQMs in Ajman & RAK. Complete assembly lines and machinery are mainly from Germany and Italy, pushing the production capacity to 432,000 SQMs annually. Our factories have obtained ISO9001 certification in recognition of our production quality-



-in recognition of our production quality.

Moreover, the production facilities are linked with technical department through using Orgadata software to insure that production processes will be accurate and as per approved shop drawing & fabrication orders.

OUR FACILITIES

PRODUCTION CAPABILITIES



OUR FACILITIES

PRODUCTION CAPABILITIES



OUR FACILITIES

LIST OF EQUIPMENT

EQUIPMENT	MODEL	QTY
CUTTING MACHINE	ELUMATEC DG104+E355	1
	EMMEGI CLASSIC MAGIC 500	2
	EMMEGI COMBI 5 AXIS TWIN HEAD	1
CNC MACHINE	LGF GAMMA	1
	SATELLITE XL 5 AXES	1
	SATELLITE 5 AXES	1
NOTCHING MACHINE	PHANTOMATIC 4 AXES	2
	LGF ALFA	1
AUTOMATIC ANGLE CUTTING MACHINE	LGF DIXI	1
	FOMINDUSTRIE MIRAGE 600	1
FREEZING MACHINE	INFISMAC TR/450-AUTO	1
	LGF TIGER 115	1
	LGF TRACER	2
CUTTING MACHINE	LGF DUPLEX	1
	SINGLE HEAD CUTTING MACHINE	4

OUR FACILITIES

LIST OF EQUIPMENT

EQUIPMENT	MODEL	QTY
PROFILE SHARING	EMMIGE RIIFILA 350	2
CRIMPING MACHINE	ELUMATEC EP124/00	1
	YILMAZ KP120	1
SILICONE	LISEC SILICONE BONDING MACHINE	2
SHARING AND PRESS BREAK	APHS 31160 BAYKAL PRESS BREAK	1
	MGH3110 BAYKAL SHARING MACHINE	1
	TRUECUT QH11D SHARING MACHINE	1
	WC67Y HYDRAULIC PRESS BREAK	1
IRON HEAD	EDWARDS 50 TON	1
CLADDING	CNC YILMAZ CPM4150	1
	BALA CPM E2B	1
PUNCHING DRAINAGE	HYDRO 2700	3
	HYDRO OG010	1
	HYDRO OG001	1
HANDLE PUNCHING	HYDRO OF002	1
CORNER NOTCHING	HYDRO OF001	1
LOCK PUNCHING	HYDRO OG011	1
	HYDRO OG012	1

OUR FACILITIES

LIST OF EQUIPMENT

EMMEGI

For various operations on Steel and aluminum profile up to 6.5LM and section 400 x 400mm.

Phantomatic 4 Axes



OUR FACILITIES

LIST OF EQUIPMENT

The EMMEGI ITALY

Which can machine both Aluminum and steel sections up 600 mm diameter and 12000 mm length. Machine has 4 stations. (Each station can work independently)

SATELLITEXL 5 Axes



OUR FACILITIES

LIST OF EQUIPMENT

EMMEGI CLASSIC MAGIC 500



EMMEGI CLASSIC MAGIC 500



MAN POWER FACTORY

& SITE OPERATION

Location	QTY
Factory - Technical Team	
Sr. Designer Engineers	05
Design Engineers	17
Structural Engineer	2
Site - Operation Team	
Project Manager	6
Site engineer	10
Site supervisor	18
Site coordinator	8
Site foreman	30
Site installation technician	365
Site installation helper	195
Factory & Site - Quality and Safety Team	
Factory & Site Quality Controller	15
Site Safety Officer	18
Factory - Production Team	
Production supervisor	12
Production Foreman	29
Fabrication Technician	195
Fabrication Helper	80
Electrician	8
Painter	5

WORKMAN COMPENSATION POLICY



Date: 14/05/2019

WORKMEN'S COMPENSATION INSURANCE CERTIFICATE TO WHOMSOEVER IT MAY CONCERN

This is to certify that below mentioned insured has affected the following Insurance with us as per details given below:

Insured : National Aluminum & Steel Factory (GINCO).
Policy Ref Number : 0101060202903320000000
Period of Insurance : From 13/05/2019 to 12/05/2020 (Both dates inclusive)
Scope of Cover : As per Standard Workmen's Compensation Insurance Policy issued in accordance with UAE Federal Law No.8 of the year 1980 and subsequent Amendments thereto
Limit of Liability : USD 1,000,000 any one occurrence & in the aggregate
No of Employee : 469
Estimated Annual Wages : AED 12,533,700/-
Territorial Limit : Worldwide for Business activities arising out of UAE operations
Jurisdiction : United Arab Emirates

This certificate is issued at Insured's request and is otherwise subject to the terms, conditions and limitations of the said policy.

FOR OMAN INSURANCE COMPANY (P S C)



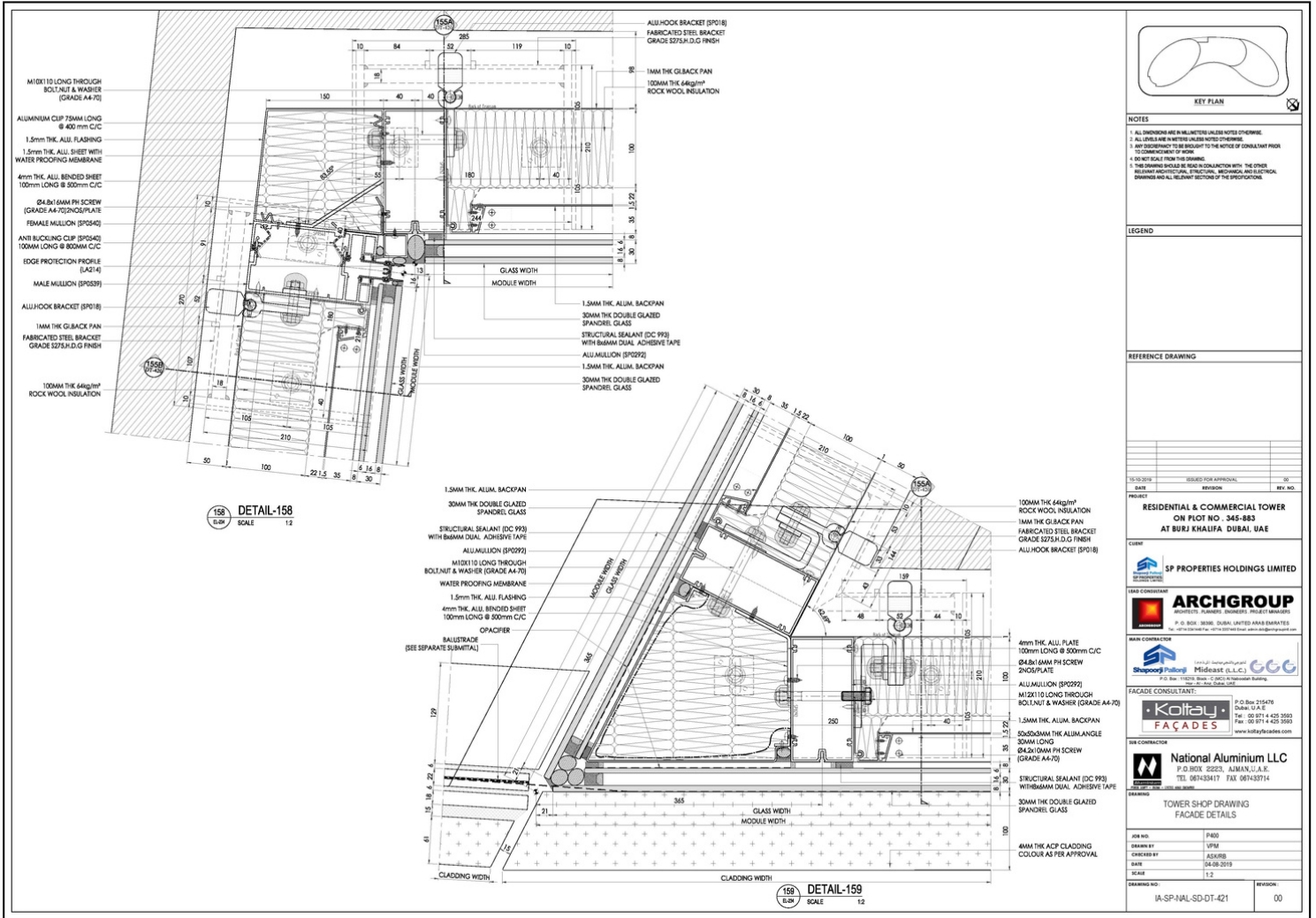


SHOP DRAWING SAMPLES



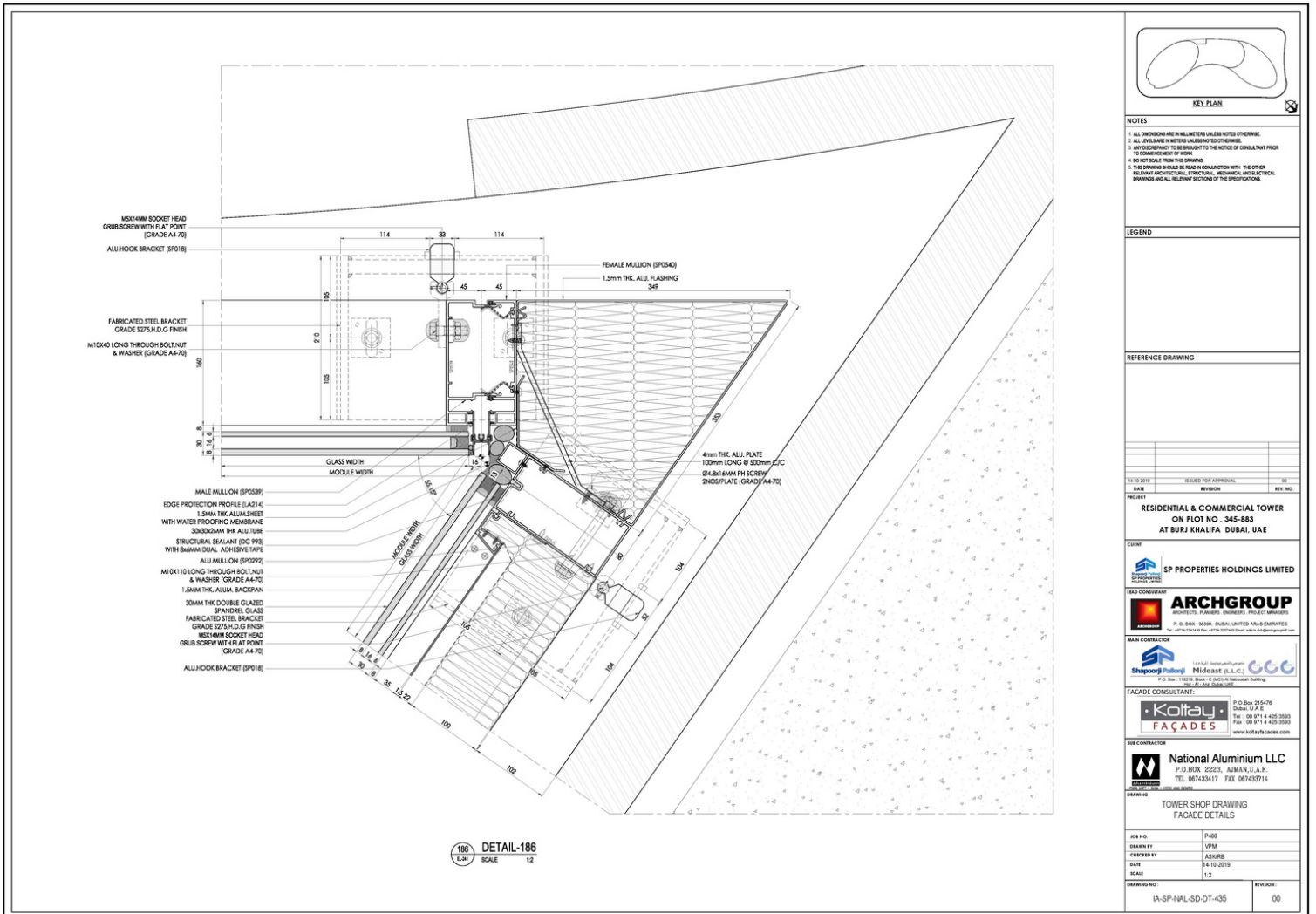
SHOP DRAWING

SAMPLES



SHOP DRAWING

SAMPLES





COMMERCIAL LICENSE & CERTIFICATES



COMMERCIAL LICENSE

& CERTIFICATES



رخصة تجارية

Commercial License

License Details / تفاصيل الرخصة

License No.	540526	رقم الرخصة
Company Name	NATIONAL ALUMINUM (L.L.C)	اسم الشركة الوطني لالمنيوم (ش.ذ.م.م)
Trade Name	NATIONAL ALUMINUM (L.L.C)	الإسم التجاري الوطني لالمنيوم (ش.ذ.م.م)
Legal Type	Limited Liability Company(LLC)	النشطل القانوني ذات مسؤولية محدودة
Expiry Date	22/12/2024	تاريخ الإنتهاء Issue Date 23/12/2002
D&B D-U-N-S ®	581475349	رقم الرخصة الأم Main License No. 540526
Register No.	81832	رقم السجل التجاري DCCI No. 74083

License Members / الأطراف

Share / الحصص	Role / الصفة	Nationality / الجنسية	Name / الإسم	No./رقم الشخص
	Manager / مدير	United Arab Emirates / الإمارات	غيات محمد غيات	25475

GHEYATH MOHAMMAD GHEYATH

License Activities / نشاطات الرخصة التجارية

Glass & Mirrors Trading	تجارة الزجاج والمرايا
Building Metal Products Trading	تجارة الاتعمال المعدنية لاثنية
Glass & Aluminum Installation & Maintenance	تركيب الزجاج وأشعل الالمنيوم في المباني وصيانتها

Address / العنوان

Phone No	971-4-3206777	هاتفون	P.O. Box	49216	صندوق بريد
Fax No	971-4-3206999	فاكس	Parcel ID	346-530	رقم القطعة
Mobile No	971-50-6460537	هاتف متحرك	S.khalil@ginco.ae	Email	البريد الإلكتروني

مكتب رقم 20- ملك غيات محمد غيات-برج خليفة

Remarks / ملاحظات

تم اضافة نشاط في 11/07/2016

Print Date 11/01/2024 15:19 تاريخ الطابعة Receipt No. 15454299 رقم الإيصال



بمكافئ ان تجد رخصتك التجارية من داخل الرسائل النصية القصيرة، أرسل رقم الرخصة إلى 6969 (دوراتصالات) للحصول على ان النقي.
Now you can renew your trade license by sending a text message (SMS). Send your trade license number to 6969 (Duf Etisalat) to receive payment voucher.

Get FREE access to Zoho One for the first year
احصل على زوهورن مجاناً للسنه الأولى
Zoho.com/vet



وثيقة إلكترونية معتمدة وصادرة بدون توقيع من دائرة الاقتصاد والسياحة في دبي. لمراجعة صحة البيانات الواردة في الرخصة يرجى مسح رمز الاستجابة السريعة this is a certified e-document issued without signature by the department of Economy and Tourism .Kindly Scan the QR Code to Verify the certificate

COMMERCIAL LICENSE

& CERTIFICATES

مركز أبوظبي للأعمال
Abu Dhabi Business Center



دائرة التنمية الاقتصادية
DEPARTMENT OF ECONOMIC DEVELOPMENT



Economic License

Commercial License

Emerging Economic Establishment

رخصة اقتصادية

رخصة تجارية

منشأة اقتصادية ناشئة

License No	:	CN-2712186	:	رقم الرخصة
ADCCI No	:	2596504	:	عضوية الغرفة
Establishment Card MOHRE	:	992166	:	وزارة الموارد البشرية والتوطين : بطاقة المنشأة
Establishment Card ICA	:	530918	:	الهيئة الاتحادية للهوية والجنسية - بطاقة المنشأة
Legal Form	:	Sole Proprietorship L.L.C.	:	شركة الشخص الواحد ذ م م الشكل القانوني
Trade Name	:	GINCO ALUMINIUM AND GLAZING INSTALLATION COMPANY - SOLE PROPRIETORSHIP L.L.C.	:	الإسم التجاري
Establishment Date	:	31/01/2019	:	تاريخ تأسيس المنشأة
Issue Date	:	22/02/2023	:	تاريخ الإصدار
Expiry Date	:	21/02/2024	:	تاريخ الإنتهاء

الصفة Role	الجنسية Nationality	الملاك / الشركاء Owners / Partners	الرمز No.
مالك Owner	الإمارات العربية المتحدة United Arab Emirates	غياث محمد غياث GHEYATH MOHAMMAD GHEYATH	41702993

Economic Activities	:	الأنشطة الاقتصادية
- Glass Plates Installation Works	:	- أعمال تركيبات الالواح الزجاجية
- Aluminium Installation Works	:	- أعمال تركيبات الألمنيوم
Address	:	العنوان
Onwani Address	:	العنوان الموحد

Official Email	:	DANISH@NATIONALGINCO.AE	:	البريد الإلكتروني الرسمي
Official Mobile	:	+971524438633	:	رقم التواصل الرسمي



هيئة أبوظبي للدفاع المدني
ABU DHABI CIVIL DEFENCE
AUTHORITY



www.added.gov.ae

وثيقة معتمدة وصادرة بدون توقيع أو ختم من دائرة التنمية الاقتصادية - أبوظبي. للتحقق من صحة البيانات الواردة في الرخصة برجاء زيارة الموقع www.tamm.abudhabi
Approved document issued without signature or stamp by the Department of Economic Development - Abu Dhabi. To verify the license kind visit www.tamm.abudhabi

COMMERCIAL LICENSE

& CERTIFICATES



Government of Ajman



Department of Economic Development



Industrial License / رخصة صناعية

Regular License - رخصة عادية

License No. 255 رقم الرخصة

ACCI No. 3013 رقم الغرفة

Register No. 2472 رقم السجل التجاري

License Details	Renew License / تجديد رخصة	تفاصيل الرخصة
Trade Name (NATIONAL ALUMINIUM & STEEL FACTORY (GINCO		الاسم التجاري المصنع الوطني للحداة والالمنيوم(جينكو)
Legal Form Sole Establishment		الشكل القانوني مؤسسة فردية
Expire Date 2024-11-27 تاريخ الانتهاء		Issue Date 1983-06-04 تاريخ الاصدار

Role / الصفة	Passport / رقم الجواز	Nationality / الجنسية	Member Name / اسم صاحب التراخيص
مالك Owner - Proprietor	PGPP09952	الإمارات العربية المتحدة United Arab Emirates- The UAE	غياث محمد غياث GHEYATH MOHAMMAD GHEYATH
مدير Manager - Director	N95847874	ايران Iran	ارش محمد شريف بيضداد ARASH MOHAMMAD SHARIF PISHDAD

Activites	الانشطة
Building Metal Products Manufacturing	صناعة الأشغال المعدنية للمباني

صندوق البريد P.O. Box	تاريخ انتهاء عقد الإيجار Contract Expiry Date	اسم المؤجر / Lessor	العنوان / Address
0	2024-02-14	شيخ فضلي محمد فضل / شيخ خليل / شيخ فضل محمد فضل فضلي خليل فرقان / شيخ محمد فضل فضل محمد فضل	مصنع / مستودع رقم 01، عجمان الصناعية 1 Warehouse - Factory No. 01 Ajman Industrial 1

ملاحظات

Emp No. رقم الموظف	Voucher Date. تاريخ الايصال	Voucher No. 30221326 رقم الايصال
	2023-12-20	

Print Date 2023-12-20 تاريخ الطباعة

وثيقة إلكترونية معتمدة ومصادرة بدون توقيع من دائرة التنمية الاقتصادية - عجمان. لمراجعة صحة البيانات الواردة في الرخصة يرجى زيارة الموقع الإلكتروني www.ajmanded.ae
Approved electronic document issued without signature by the Department of Economic Development. To verify the license kindly visit www.ajmanded.ae

COMMERCIAL LICENSE

& CERTIFICATES

CERTIFICATE OF REGISTRATION



PEERS QUALITY
ASSURANCE LTD

This is to certify that

NATIONAL ALUMINIUM LLC

Of

P.O. Box-49216, Parcel ID – 368598, Dubai,
United Arab Emirates

Operates a **Quality Management System** which has been assessed as conforming to:

ISO 9001:2015

For the Scope of Activities:

**Design, Manufacturing and Installation of Curtain Walls, Doors Windows,
Skylights, Shop front, Aluminium Cladding and other Architectural Metal
Works**

Certificate Number: **UAE/5/8173431664**
Date of Initial Assessment: **30/09/2023**
Date of Registration: **05/10/2023**
Date Re-Issued: **N/A**
Date of Expiry: **05/10/2024**

Certificate approved by:

Chris McMillan - Managing Director
Peers Quality Assurance Limited

This Certificate remains the property of
Peers Quality Assurance Limited
Suite 2, Austin Court
Walsall Road
Four Oaks
Sutton Coldfield
B74 4QY England
www.pqal.co.uk

For verification of this certificate, please contact the PQAL UK Office



COMMERCIAL LICENSE

& CERTIFICATES

CERTIFICATE OF REGISTRATION



PEERS QUALITY
ASSURANCE LTD

This is to certify that

NATIONAL ALUMINIUM LLC

Of

P.O. Box-49216, Parcel ID – 368598, Dubai,
United Arab Emirates

Operates an **Environmental Management System** which has been assessed as conforming to:

ISO 14001:2015

For the Scope of Activities:

**Design, Manufacturing and Installation of Curtain Walls, Doors Windows,
Skylights, Shop front, Aluminium Cladding and other Architectural Metal
Works**

Certificate Number: **UAE/5/2602265953**
Date of Initial Assessment: **30/09/2023**
Date of Registration: **05/10/2023**
Date Re-Issued: **N/A**
Date of Expiry: **05/10/2024**

Certificate approved by:

Chris McMillan - Managing Director
Peers Quality Assurance Limited

This Certificate remains the property of
Peers Quality Assurance Limited
Suite 2, Austin Court
Walsall Road
Four Oaks
Sutton Coldfield
B74 4QY England
www.pqal.co.uk

For verification of this certificate, please contact the PQAL UK Office



COMMERCIAL LICENSE

& CERTIFICATES

CERTIFICATE OF REGISTRATION



PEERS QUALITY
ASSURANCE LTD

This is to certify that

NATIONAL ALUMINIUM LLC

Of

P.O. Box-49216, Parcel ID – 368598, Dubai,
United Arab Emirates

Operates a **Health & Safety Management System** which has been assessed as conforming to:

ISO 45001:2018

For the Scope of Activities:

**Design, Manufacturing and Installation of Curtain Walls, Doors Windows,
Skylights, Shop front, Aluminium Cladding and other Architectural Metal
Works**

Certificate Number: **UAE/5/5668496614**
Date of Initial Assessment: **30/09/2023**
Date of Registration: **05/10/2023**
Date Re-Issued: **N/A**
Date of Expiry: **05/10/2024**

Certificate approved by:

Chris McMillan - Managing Director
Peers Quality Assurance Limited

This Certificate remains the property of
Peers Quality Assurance Limited
Suite 2, Austin Court
Walsall Road
Four Oaks
Sutton Coldfield
B74 4QY England
www.pqal.co.uk

For verification of this certificate, please contact the PQAL UK Office





PREVIOUS APPROVALS



PREVIOUS APPROVALS




JUMEIRAH LIVING MARINA GATE											
SCA	SUBCONTRACTOR APPROVAL REQUEST										
Project Name:	JUMEIRAH LIVING MARINA GATE										
Reference No.:	NAJ-MG3-SCA-0001-00										
Contract Title:	CBC203 Marina Gate										
TO: EMPLOYER - SELECT	THE CONSULTANT - ECCS										
WE SUBMIT THE FOLLOWING FOR: <input checked="" type="checkbox"/> APPROVAL <input type="checkbox"/> INFORMATION											
Subcontractor Approval Request for M/s. National Aluminium / Jangho JV Façade / External Cladding											
SPECIFIED	DEVIATION										
CONTRACTOR'S AUTHORIZED SIGNATURE:											
ALEC Johan Moolman											
CONSULTANT'S COMMENTS:											
<i>Refer to the comments on attached sheet</i>	<table border="1" style="width: 100%; border-collapse: collapse;"> <tr> <td style="width: 20%;">STATUS - A</td> <td style="width: 10%;"><input type="checkbox"/></td> <td rowspan="4" style="width: 10%; text-align: center; vertical-align: middle;"> CONSULTANT - ECCS Safouh Nour </td> <td rowspan="4" style="width: 15%; text-align: center; vertical-align: middle;"> التجمع الهندسي مهندسون استشاريون ENGINEERING CONSORTIUM CONSULTING ENGINEERS JUMEIRAH GATE PROJECT </td> </tr> <tr> <td>STATUS - B</td> <td><input checked="" type="checkbox"/></td> </tr> <tr> <td>STATUS - C</td> <td><input type="checkbox"/></td> </tr> <tr> <td>STATUS - D</td> <td><input type="checkbox"/></td> </tr> </table>	STATUS - A	<input type="checkbox"/>	 CONSULTANT - ECCS Safouh Nour	 التجمع الهندسي مهندسون استشاريون ENGINEERING CONSORTIUM CONSULTING ENGINEERS JUMEIRAH GATE PROJECT	STATUS - B	<input checked="" type="checkbox"/>	STATUS - C	<input type="checkbox"/>	STATUS - D	<input type="checkbox"/>
STATUS - A	<input type="checkbox"/>	 CONSULTANT - ECCS Safouh Nour	 التجمع الهندسي مهندسون استشاريون ENGINEERING CONSORTIUM CONSULTING ENGINEERS JUMEIRAH GATE PROJECT								
STATUS - B	<input checked="" type="checkbox"/>										
STATUS - C	<input type="checkbox"/>										
STATUS - D	<input type="checkbox"/>										
<i>CAYAD tower + XCRAD tower AEDAS, file gate entries</i>	<table border="1" style="width: 100%; border-collapse: collapse;"> <tr> <td style="width: 20%;">STATUS - A</td> <td style="width: 10%;"><input type="checkbox"/></td> <td rowspan="4" style="width: 10%; text-align: center; vertical-align: middle;"> ID CONSULTANT - AEDAS Fergus Duncan 2018-02-12 </td> <td rowspan="4" style="width: 15%;"></td> </tr> <tr> <td>STATUS - B</td> <td><input checked="" type="checkbox"/></td> </tr> <tr> <td>STATUS - C</td> <td><input type="checkbox"/></td> </tr> <tr> <td>STATUS - D</td> <td><input type="checkbox"/></td> </tr> </table>	STATUS - A	<input type="checkbox"/>	 ID CONSULTANT - AEDAS Fergus Duncan 2018-02-12		STATUS - B	<input checked="" type="checkbox"/>	STATUS - C	<input type="checkbox"/>	STATUS - D	<input type="checkbox"/>
STATUS - A	<input type="checkbox"/>	 ID CONSULTANT - AEDAS Fergus Duncan 2018-02-12									
STATUS - B	<input checked="" type="checkbox"/>										
STATUS - C	<input type="checkbox"/>										
STATUS - D	<input type="checkbox"/>										
<i>Complete Comments Interact Comments Comments</i>	<table border="1" style="width: 100%; border-collapse: collapse;"> <tr> <td style="width: 20%;">STATUS - A</td> <td style="width: 10%;"><input type="checkbox"/></td> <td rowspan="4" style="width: 10%; text-align: center; vertical-align: middle;"> EMPLOYER - SELECT Ian Stapely </td> <td rowspan="4" style="width: 15%; text-align: center; vertical-align: middle;"> </td> </tr> <tr> <td>STATUS - B</td> <td><input type="checkbox"/></td> </tr> <tr> <td>STATUS - C</td> <td><input checked="" type="checkbox"/></td> </tr> <tr> <td>STATUS - D</td> <td><input type="checkbox"/></td> </tr> </table>	STATUS - A	<input type="checkbox"/>	EMPLOYER - SELECT Ian Stapely		STATUS - B	<input type="checkbox"/>	STATUS - C	<input checked="" type="checkbox"/>	STATUS - D	<input type="checkbox"/>
STATUS - A	<input type="checkbox"/>	EMPLOYER - SELECT Ian Stapely									
STATUS - B	<input type="checkbox"/>										
STATUS - C	<input checked="" type="checkbox"/>										
STATUS - D	<input type="checkbox"/>										






Contractor to Engineer

Form-06 Rev. 04

PREVIOUS
APPROVALS

	<i>Log-update</i> 													
PRE-QUALIFICATION SUBMITTAL SHEET	R0476-ASGC-PQ-C-0019	Rev.01												
Project Name	R0476_ALOFT HOTEL & ELEMENT SERVICED APARTMENT AT AL RAFFA	Project No. R0476 Date: 07-Aug-18												
Submittal Title: Prequalification Document of National Aluminium														
Discipline: <input type="checkbox"/> - Civil/Structural <input checked="" type="checkbox"/> - Architectural <input type="checkbox"/> - MEP <input type="checkbox"/> - ID														
We are sending herewith under separate cover the documents listed below:														
ITEM NO.	DOCUMENT / DWGS. SPECS BOQ REF.	DESCRIPTION												
1.	R0476-ASGC-PQ-C-0019	Pre-qualification of National Aluminium <i>(Scope of work Curtain Walls, Aluminum Cladding, Glass Doors & Windows, and other Architectural Metal Works)</i>												
		REV 1												
		COPIES 3												
		REMARKS												
FOR ASGC GROUP: Signature: <i>[Signature]</i> MR. FIRAS KASSEM - PROJECT MANAGER Received by: <i>[Signature]</i> Signature: _____ Date: _____														
Comments : <i>Kindly Refer to attached Engineer's Comments sheets (28 pages A4)</i>														
Resident Engineer: <i>[Signature]</i> Samah Habeb Signature: <i>[Signature]</i> Date: 04/09/18		<table border="1" style="width: 100%; border-collapse: collapse;"> <tr> <th>DESIGNATION</th> <th>INFO</th> <th>ACTION</th> </tr> <tr> <td>KHA</td> <td></td> <td></td> </tr> <tr> <td>HAB</td> <td></td> <td></td> </tr> <tr> <td>BAK</td> <td></td> <td></td> </tr> </table>	DESIGNATION	INFO	ACTION	KHA			HAB			BAK		
DESIGNATION	INFO	ACTION												
KHA														
HAB														
BAK														
Status: <input type="checkbox"/> Approved <input checked="" type="checkbox"/> Approved as Noted <input type="checkbox"/> Not Approved <input type="checkbox"/> Rejected / Resubmit														
Copy to: Head Office <input type="checkbox"/> Client <input type="checkbox"/> Consultant <input type="checkbox"/> QS <input type="checkbox"/> Others <input type="checkbox"/> Sheet No. 1 of 1														
Note: Engineer's approval does not relieve the contractor from contract obligation and responsibilities.														

**PREVIOUS
APPROVALS**

 <i>Where luxury resides</i>	 National Engineering Bureau <small>Architecture & Engineering Consultants</small>	 GINCO <small>U.A.E.P.C.</small>																												
APPROVAL OF SUPPLIER																														
Project Name:	Dubai Hills Estate Sidra -2, 422Vila.	Project Code: SIDRA-2-G-132/A																												
Plot No / Location:	Sidra 2, Dubai Hills Estate, MBR Garden, PA-25 Sidra Community (422 Villas)	Date: 15-07-2017																												
Main Contractor:	Ginco General Contracting LLC	Ref. No: SID2-GINCO-PA25-ARC-PG-0014																												
Department:	<input checked="" type="checkbox"/> Architectural <input type="checkbox"/> Civil <input type="checkbox"/> Electrical <input type="checkbox"/> Mechanical <input type="checkbox"/> Structural <input type="checkbox"/> Others																													
Work Description	ALUMINIUM WORKS.																													
S.No.	NEB Specified Sub-Contractor	Alternative Proposed Sub-Contractor																												
1	Same As Specified M/s. NATIONAL ALUMINIUM & STEEL FACTORY																													
Enclosure:																														
Reason for Alteration:																														
Submitted By: (Name) Eng. Anil Ambwani	Signature:	Date: 15-07-2017																												
Received By: (Name)	Signature:	Date:																												
BELOW PORTION FOR NEB USE ONLY																														
Status:	<input type="checkbox"/> Approved <input checked="" type="checkbox"/> Approved as noted <input type="checkbox"/> Resubmitted <input type="checkbox"/> Rejected																													
Comments: <small>(Refer to NEB-3537)</small>	NO OBJECTION AS THIS WORK APPROVED ON SIDRA 2. HOWEVER, SUBJECT TO ; 1) CLIENT APPROVAL 2) SUBCONTRACTOR RESPONSIBILITY & WORKMANSHIP AT-SITE 3) SHOP DRAWING AND MATERIAL SUBMITTAL 4) COMPLY WITH PROJECT SPECIFICATIONS, DRAWINGS & AUTHORITIES REQUIREMENT. 5) COMPLY WITH CONTRACTOR-BUSINESS PROGRAM.																													
Signed By: (Name)	Signature:	Date:																												
	MUSHAH	19-7-2017																												
Hand Over to: (Name)	Signature:	Date:																												
Client Approval: (Name)	Signature:	Date:																												
Comments:	<table border="1" style="width: 100%; border-collapse: collapse;"> <tr> <td style="width: 50%;">SITE: G-132</td> <td style="width: 50%;">RECEIVED</td> </tr> <tr> <td>No. 1029</td> <td></td> </tr> <tr> <td>Date: 29/8/2017</td> <td></td> </tr> <tr> <td>CONTRACTOR:</td> <td><input checked="" type="checkbox"/></td> </tr> <tr> <td>ARCHITECT:</td> <td><input checked="" type="checkbox"/></td> </tr> <tr> <td>ENGINEER:</td> <td><input checked="" type="checkbox"/></td> </tr> <tr> <td>INSPECTOR:</td> <td><input checked="" type="checkbox"/></td> </tr> <tr> <td>CLIENT:</td> <td><input checked="" type="checkbox"/></td> </tr> <tr> <td>NEB:</td> <td><input checked="" type="checkbox"/></td> </tr> <tr> <td>DATE:</td> <td><input checked="" type="checkbox"/></td> </tr> <tr> <td>TIME:</td> <td><input checked="" type="checkbox"/></td> </tr> <tr> <td>BY:</td> <td><input checked="" type="checkbox"/></td> </tr> <tr> <td>FOR:</td> <td><input checked="" type="checkbox"/></td> </tr> <tr> <td>REMARKS:</td> <td></td> </tr> </table>		SITE: G-132	RECEIVED	No. 1029		Date: 29/8/2017		CONTRACTOR:	<input checked="" type="checkbox"/>	ARCHITECT:	<input checked="" type="checkbox"/>	ENGINEER:	<input checked="" type="checkbox"/>	INSPECTOR:	<input checked="" type="checkbox"/>	CLIENT:	<input checked="" type="checkbox"/>	NEB:	<input checked="" type="checkbox"/>	DATE:	<input checked="" type="checkbox"/>	TIME:	<input checked="" type="checkbox"/>	BY:	<input checked="" type="checkbox"/>	FOR:	<input checked="" type="checkbox"/>	REMARKS:	
SITE: G-132	RECEIVED																													
No. 1029																														
Date: 29/8/2017																														
CONTRACTOR:	<input checked="" type="checkbox"/>																													
ARCHITECT:	<input checked="" type="checkbox"/>																													
ENGINEER:	<input checked="" type="checkbox"/>																													
INSPECTOR:	<input checked="" type="checkbox"/>																													
CLIENT:	<input checked="" type="checkbox"/>																													
NEB:	<input checked="" type="checkbox"/>																													
DATE:	<input checked="" type="checkbox"/>																													
TIME:	<input checked="" type="checkbox"/>																													
BY:	<input checked="" type="checkbox"/>																													
FOR:	<input checked="" type="checkbox"/>																													
REMARKS:																														

PREVIOUS APPROVALS

Handwritten initials/signature

The Employer	The Engineer	AOR	The Contractor
			
PROJECT NAME : DOWNTOWN VIEWS RESIDENTIAL TOWER			
SUBCONTRACTOR / SUPPLIER APPROVAL REQUEST			
Date: 03.04.2019		Reference: ABM/SAR/CIV/NAL/0067 - Rev.0	
Discipline : Architectural <input checked="" type="checkbox"/> Structural <input type="checkbox"/> Mechanical <input type="checkbox"/> Electrical <input type="checkbox"/> Other <input type="checkbox"/>			
Trade Name Of The Subcontractor/Supplier: M/s. NATIONAL ALUMINIUM			
Scope: Prequalification of National Aluminium			
Contractors Authorized Signature:			
Name: R. Vasu Kumar			
Signature: 			
THE ENGINEER COMMENTS		Date: 03.04.2019	
<ul style="list-style-type: none"> - No Objection to use services of M/s. National Aluminium LLC. for the stick curtain walls, aluminium and glazing works only under the supervision of the Main Contractor M/s. ABM. Subject to full compliance to project specifications, performance requirements, DM regulations and UAE FLS code. - No Design and Engineering Section included in the submitted PQD - We would like to see previous Client's citations or appreciation letters if available. - We understand that M/s. National Aluminium are not the Glass/IGU processor. Hence, Glass processor PQD to be submitted for Engineer's review and approval. - We understand that the GRC work will be carried out by a separate Sub-Contractor. - Contractor to submit the corresponding PQD separately for Engineer's review and approval. - We are concerned about the M/s. National Aluminium Design team, as we noticed from the provided organization chart which does not include Mr. Niel the design manager introduced during 8th April progress meeting as well as there is only one design team leader assigned for the project which is not acceptable, we would appreciate if the contractor can provide us with more detailed design team organization chart. - Provide CVs for the new design manager as well as the design team leaders. - Provide CV for the QA/QC personnel, and advise who will be in charge of the QA/QC inside the Glass processor factory. - Refer to comments on the provided responsibility Matrix. 		CONSULTANT STATUS	
		<input type="checkbox"/> A- Approved <input checked="" type="checkbox"/> B- Approved As Noted <input type="checkbox"/> C- Rejected / Resubmit <input type="checkbox"/> D- For Information / Not Required	
Reviewed By: 	For The Engineer: 	For The Employer: (If Required)	
Name: 	Name: 	Name:	
Signature: 11/04/19	Signature: 11/04/19	Signature:	

ABM
JOB-NO: J-637
11 APR 2019
RECEIVED

Handwritten signature

ABM				
Innovative Engineering Consultants				
PROJECT NAME: Downtown Views Tower				
A	B	C	D	E
APPROVED	APPROVED	APPROVED	APPROVED	APPROVED
ALL WORKS	ALL WORKS	ALL WORKS	ALL WORKS	ALL WORKS
Not Approved	Not Approved	Not Approved	Not Approved	Not Approved
Not Approved	Not Approved	Not Approved	Not Approved	Not Approved

This document is issued in accordance with the contract General Requirements and conditions and other applicable conditions and is intended as only general information only for design. The Contractor remains fully responsible for accuracy of information, and any technical drawings, specifications and other tasks and results. Change of information contained in this document and available and to which it is a further version. The approval of Engineer to contractor activities does not release the contractor of its responsibility under the contract to meeting the design intent and design objectives of submittals.

PREVIOUS APPROVALS



Contractor Submittals



Development:		Maryam Island	
Product Name:		Maryam Island Beach Residence	Product Number: UAE108-00100
Description: UAE108-00400-GCC-SPQ-18-028-00- PRE QUALIFICATION ALUMINIUM AND GLAZING WORKS (NATIONAL ALUMINIUM LLC)			
PMWeb# : 723		Submittal Date : 18/02/2019	
Submittal # : UAE108-00400-GCC-SPQ-18-028-00		Revision: 0	
Category : Vendor's Pre-qualification		Status: Submitted	
Sub-Category: Structure			
To Company	To Contact	From Company	From Contact
Studio International Engineering Consultants	Roy Caagbay- SIEC	Ginco Contracting Co	Hari Prasad-GCC

SIE

CONSULTANTS

Project : MARYAM BEACH RESIDENCE

Signature : *[Signature]*

Date : 18/02

No	Document #	Rev	Description	Consultant Review Status	Consultant Review Notes
1		0	PRE QUALIFICATION OF ALUMINIUM AND GLAZING WORKS (NATIONAL ALUMINIUM LLC) - SUPPLY AND INSTALLATION OF ALUMINIUM DOORS, WINDOWS, SHOP FRONT, HANDRAIL & CANOPY	AAN	Refer to Attached comments sheet.

Date Closed	06/03/2019	Reviewed By	Basel Birkelar
-------------	------------	-------------	----------------

Attachments

UAE108-00400-GCC-SPQ-18-028-00- PRE QUALIFICATION ALUMINIUM AND GLAZING WORKS (NATIONAL ALUMINIUM LLC)

Notes		
Subject	Notes	Created By

Workflow Action Users					
#	All Must Approve	Due Date	Role	User	Instructions
0			--Submitter--	Hari Prasad-GCC	
1		Feb-19-2019	CSC-Documents Controller-SEIC	Aimee Reyes	Please do a QA check before proceeding it to the next step. Kindly return the record in case of any issue.
2		Mar-4-2019	CSC-Project Manager-SEIC	Amo Dehdashti	
2		Mar-4-2019	CSC-Resident Egr-SEIC	Raafat Sawalha-SIEC	<i>[Signature]</i>



1 of 1

Printed on 2/18/2019 5:43:28 PM

PMWeb Generated Report



PROJECTS LIST



PROJECTS LIST

PROJECT NAME

Emaar Golf Heights @ Emirates Living Dubai



Client: Emaar properties PJSC

Consultant: Mirage Leisure and Development

Contractor: Al Sahel Contracting Company LLC

Scope of Work & Value: Aluminium & Glazing Works of Unitized Curtain Wall, fin & Canopy

PROJECTS LIST

PROJECT NAME

Dubai Mall Aluminium Cladding Renovation @ Down Town - Dubai



Client: Emaar Properties PJSC

Consultant: Mirage Leisure and Development

Contractor: National Aluminium LLC (Ginco Group of Companies)

Scope of Work & Value: Aluminium Cladding Renovation

Period: December 2023 - present

PROJECTS LIST

PROJECT NAME

JUMEIRAH LIVING MARINA GATE @ MARINA GATE - DUBAI / 60 Floors



Client: Select Group

Consultant: ECCE & Inhabit Façade Consultants

Contractor: ALEC Engineering & Contracting LLC

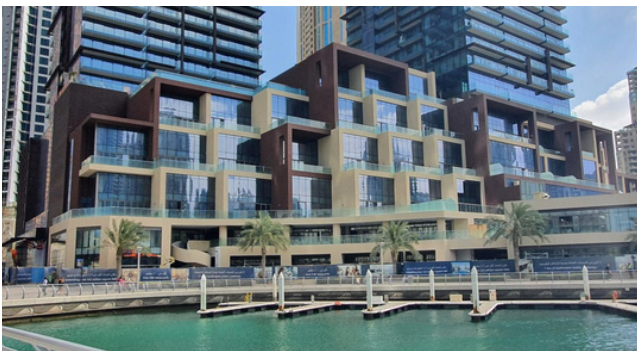
Scope of Work & Value: Aluminium & Glazing Works of Unitized Curtain Wall, fin & Canopy

Period: July 2018 - April 2020

PROJECTS LIST

PROJECT NAME

JUMEIRAH LIVING MARINA GATE @ MARINA GATE - DUBAI / 60 Floors



PROJECTS LIST

PROJECT NAME

BUBAI CREEK HARBOUR - CREEK HORIZON - PLOT A019 / 39 Floors & 36 Floors



Client: EMAAR - The Lagoons LLC

Consultant: SSH International Engineering & Inhabit Façade Consultant

Contractor: AF Construction L.L.C (AFC).

Scope of Work & Value: Aluminium & Glazing Works, GRC & Limestone Works

Period: January 2019 - October 2020

PROJECTS LIST

PROJECT NAME

MARINA VISTA BEACHFRONT - PLOT Z02. B16 (3927077)



Client: EMAAR Properties PJSC

Consultant: BH.NS Engineering Consultants

Contractor: China State Construction Engrg. Corp. (Middle East) (LLC)

Scope of Work & Value: Aluminium & Glazing Works, GRC, Stone Cladding, & Balcony Balustrade

Period: December 2020 - Present

PROJECTS LIST

PROJECT NAME

PEARL BAY - ABUDHABI



Client: Al - Tamouh Investment LLC

Sub Developer & Consultant: Radiant Enterprises Real Estate LLC & Architectural Consulting Group (ACG)

Contractor: Malaih Investment & Projects Development LLC

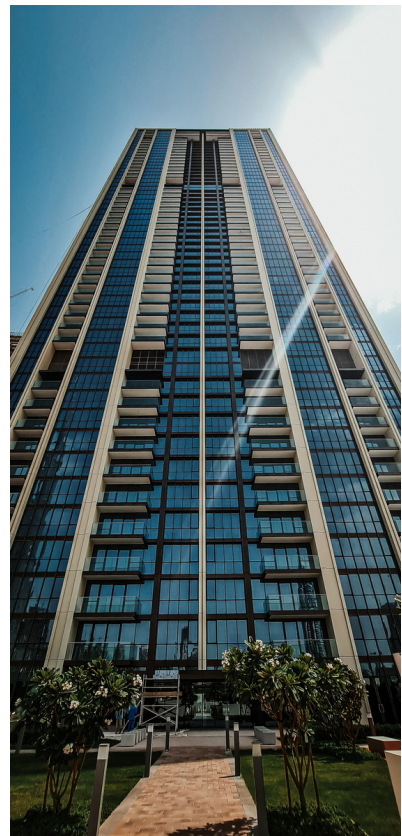
Scope of Work & Value: Aluminium & Glazing Works, ACP Cladding, Sliding Doors, & Balcony Balustrade

Period: September 2022 - Present

PROJECTS LIST

PROJECT NAME

DOWNTOWN VIEWS RESIDETIAL TOWER @ DOWNTOWN DUBAI / 60 Floors



Client: EMAAR Properties PJSC

Contractor: Al Basti & Muktha LLC

Consultant: AECOM Middle East LTD & Innovative Engineering Consultants

Scope of Work & Value: Aluminium & Glazing Works & Balcony Balustrade

PROJECTS LIST

PROJECT NAME

THE COVE @ DUBAI CREEK HARBOUR / 3Blocks (G+21, G+9, G+6)



Client: EMAAR - The Lagoons

Consultant: Holford Associates

Contractor: Nurol LLC

Scope of Work & Value: Aluminium & Glazing Works & GRC

Period: January 2019 - December 2021

PROJECTS LIST

PROJECT NAME

PANORAMA TOWER



Client: Emaar Pakistan

Consultant: ARCOP Associates

Contractor: ACL (Associated Constructors Limited)

Scope of Work & Value: Aluminium & Glazing Works (Curtain Wall, Balcony doors & Glass Balustrade)

Period: September 2022 - Present

PROJECT NAME

PROJECTS LIST

AYKON CITY TOWER - DUBAI



Client: DAMAC

Consultant: LACASA

Contractor: China State Construction Engrg. Corp. (Middle East) (LLC)

Scope of Work & Value: Aluminium & Glazing Works, SCW, UCW, Canopy, Glass Partition, Aluminium Cladding, Sliding Doors & Balcony Balustrade

Period: April 2022 - Present

PROJECTS LIST

PROJECT NAME

MARINA ARCADE TOWER @ DUBAI MARINA / 47 Floors



Client: Marina Arcade

Consultant: Al Ajmi Engineering Consultants LLC

Contractor: Al Rostamani Pegel LLC

Scope of Work & Value: Aluminium & Glazing Works & ACP

PROJECTS LIST

PROJECT NAME

GRAND PLAZA MOVENPICK (MEDIA CITY HOTEL) @ SHEIKH ZAYED ROAD / 28 Floors



Client: Thalia Real Estate LLC

Development & Project Management: Mirage Leisure And Development

Consultant: Arch group Consultants

Contractor: Arabtec Construction LLC

Scope of Work & Value: Aluminium & Glazing Works & ACP

PROJECTS LIST

PROJECT NAME

AFGHANISTAN INTERNATIONAL BANK @ KABUL - AFGHANISTAN



Client: Afghanistan International Bank

Consultant: Kannfinch & Koltay Façade

Contractor: M Holding

Scope of Work & Value: Bulletproof Aluminium & Glazing Works & Louver

PROJECTS LIST

PROJECT NAME

AHAD TOWER



Client: Ahad Real Estate Development LLC

Consultant: VE Experts

Contractor: Evan Lim-Penta Construction Co. LLC

Scope of Work & Value: Aluminium & Glazing Works (Curtain Wall, Balcony doors & Railing, Aluminium Cladding, Canopy)

Period: September 2021 - Present

PROJECTS LIST

PROJECT NAME

THE 9 TOWER @ BUSINESS BAY / 21 Floors



Client: GMG

Consultant: LACASA Architects & Engineering Consultants

Contractor: Ginco General Contracting LLC

Scope of Work & Value: Aluminium & Glazing Works, Balcony Balustrade & ACP

PROJECTS LIST

PROJECT NAME

COLLECTIVE 2.0 EMAAR DUBAI HILLS - PLOT 6311119



Client: EMAAR Dubai Hills

Consultant: BH.NS Engineering Consultants

Contractor:GINCO General Contracting LLC

Scope of Work & Value: Aluminium & Glazing Works

PROJECTS LIST

PROJECT NAME

ALOFT 4 STAR HOTELS & ELEMENT SERVICE APARTMENT



Client: Al Wasl Asset Management Group

Consultant: Buro Kling

Contractor: Al Shafar General Contracting (ASGC)

Scope of Work & Value: Aluminium & Glazing Works, Glass Balustrade, Canopy & ACP

PROJECTS LIST

PROJECT NAME

MEYDAN PHASES 1 & 2 @ MEYDAN / 670 Villas



Client: G & Co FZ. LLC

Consultant: Chawla Architectural Consulting Engineers

Contractor: Ginco General Contracting LLC (GGC)

Scope of Work & Value: Aluminium & Glazing Works & Glass Balustrade

PROJECTS LIST

PROJECT NAME

Murooj Al Furjan - METAC



Client: Nakheel

Consultant: LA Casa Architecture & Engineering Consultants

Contractor: Metac General Contracting LLC

Scope of Work & Value: Aluminium & Glazing Works & Glass Balustrade

PROJECTS LIST

PROJECT NAME

TILAL AL GHAF



Client: Majid Al Futtaim

Consultant: ATKINS

Contractor: ASGC (IBUILD)

Scope of Work & Value: Aluminium & Glazing Works (Curtain Wall, Balcony doors, Pergola & Glass Balustrade)

Period: September 2022 - Present

PROJECTS LIST

PROJECT NAME

SEAWORLD ABU DHABI - EXTERNAL FACADE



Client: Miral Asset Management LLC

Consultant: AECOM

Contractor: Alec Engineering & Contracting LLC

Scope of Work & Value: External & Internal Aluminium & Glazing Works AED

Period: July 2020 - Present

PROJECTS LIST

PROJECT NAME

WARNER BROTHERS THEME PARK @ ABU DHABI



Client: Al Dar Properties PJSC /Miral Project Management

Consultant: AECOM Engineering Company & Inhabit Façade Consultant

Contractor: BeSix Construct

Scope of Work & Value: Aluminium & Glazing Works

Period: August 2016 - September 2017

PROJECTS LIST

PROJECT NAME

SECURITY FORCES MEDICAL CENTER PROJECT - RIYADH



Client: Manens-Tifs

Consultant: P&T Architects and Engineers Ltd.

Contractor: ABV - Rock Group Co. Ltd.

Sub-Contractor: Al-Baz Industrial Co. Ltd. & National Aluminium LLC - Gincó

Scope of Work: Design & Fabrication of Unitized Curtain Wall

PROJECTS LIST

PROJECT NAME

Ghorroob @ Midriff / 37 Buildings



Client: Dubai Properties

Consultant: Kling Consult

Contractor: Ginco General Contracting LLC (GGC)

Scope of Work & Value: Aluminium & Glazing Works

PROJECTS LIST

PROJECT NAME

EMAAR EDEN VILLAS AT THE VALLEY



Client: EMAAR (EMMAR Gardens LLC)

Consultant: White Space Architects (WSA)

Contractor: GINCO General Contracting LLC

Scope of Work & Value: Aluminium & Glazing Works of 360 Villas

PROJECTS LIST

PROJECT NAME

MARYAM GATE RESIDENCES @ MARYAM ISLAND - SHARJAH



Client: Eagle Hills - Sharjah & Shurooq

Consultant: Studio International Engineering Consultants (SIE)

Contractor: GINCO General Contracting LLC

Scope of Work & Value: Aluminium & Glazing Works of 7 Buildings

PROJECTS LIST

PROJECT NAME

ALOFT 4 STAR HOTEL & ELEMENT SERVICE APARTMENT ON PLOT 2144568 AL GARHOUD - DUBAI



Client: Al Wasl Asset Management Group

Consultant: Buro Kling

Contractor: Al Shafar General Contracting (ASGC)

Scope of Work & Value: Aluminium & Glazing Works, Glass Balustrade, Canopy & ACP

PROJECTS LIST

PROJECT NAME

MARYAM BEACH RESIDENCE PLOT 910 @ MARYAM ISLAND - SHARJAH



Client: M/s Eagle Hills

Consultant: Studio International Engineering Consultants

Contractor: Ginco Contracting Co. (GCC) LLC

Scope of Work & Value: Aluminium & Glazing Works

PROJECTS LIST

PROJECT NAME

TOWN SQUARE DEVELOPMENT AT PLOT 35



Client: Nashama

Consultant: Mimar Emirates Engineering Consultants

Contractor: Arabian Construction Company (ACC) / Kier Group Construction Company

Scope of Work & Value: Aluminium & Glazing Works

PROJECTS LIST

PROJECT NAME

SPORTS CITY (5 TOWERS)



Client: M/s Falak Properties

Consultant: QHC Architects & Consultants

Contractor: United Engineering Construction Company (UNEC)

Scope of Work & Value: Aluminium & Glazing Works & Glass Balustrade



AWARDS & RECOGNITION



AWARDS &

RECOGNITION



“ THE MOST VALUABLE PARTNER IN 2018 BY TECHNAL MIDDLE EAST ”



“ THE MOST LOYAL PARTNER IN 2018 BY TECHNAL MIDDLE EAST ”

AWARDS &

RECOGNITION



“ BEING PART OF DELIVERING THE WARNER BROS. WORLD TO ABU-DHABI ”





**“ NATIONAL ALUMINIUM - GINCO GROUP OF COMPANIES
CONTINUES THE ON TIME DELIVERY OF HIGH QUALITY
PRODUCTS AND SERVICES FOR ITS CLIENTS
SATISFACTION. OUR CLIENTS SATISFACTION IS THE
KEY FOR OUR CONSISTENT GROWTH ”**

THANK YOU FOR CHOOSING US



Aluminium

NATIONAL ALUMINIUM - GINCO GROUP OF
COMPANIES - BRANCHES (UAE) :

ABU DHABI

DUBAI

AJMAN

RAS AL KHAIMAH

EGYPT

PO. 2223

Tel: +9716-743-3417

Fax: +9716-743-3714

